

Time To Stay Connected.... Ki-Tech Solutions forges ahead with Full Connectivity and Monitoring Platform

Ki-Tech Solutions Limited, the company set up by Richard Fordham and Andy Fulham to deliver energy optimisation and connectivity solutions for the hospitality sector have launched their fully integrated connected dashboard, partnering with monitoring specialists, KoolZone – the worlds leading solution for hands-free remote monitoring - and have been using the lockdown period to research new innovations that can link in with the platform and that will answer operators needs when the sector reopens for business.

KoolZone are used globally in 17 countries, including USA, Canada, Hong Kong, Japan and many European and African countries, as well as having a significant presence in the NHS and many research laboratories and universities.

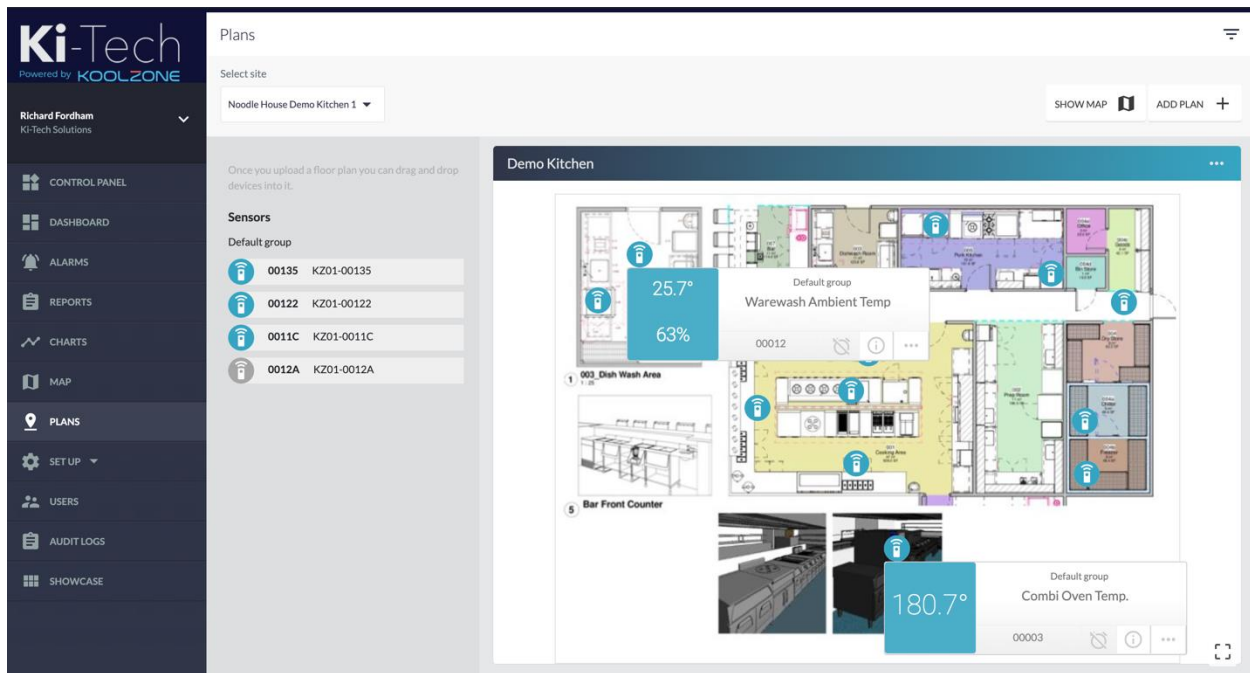
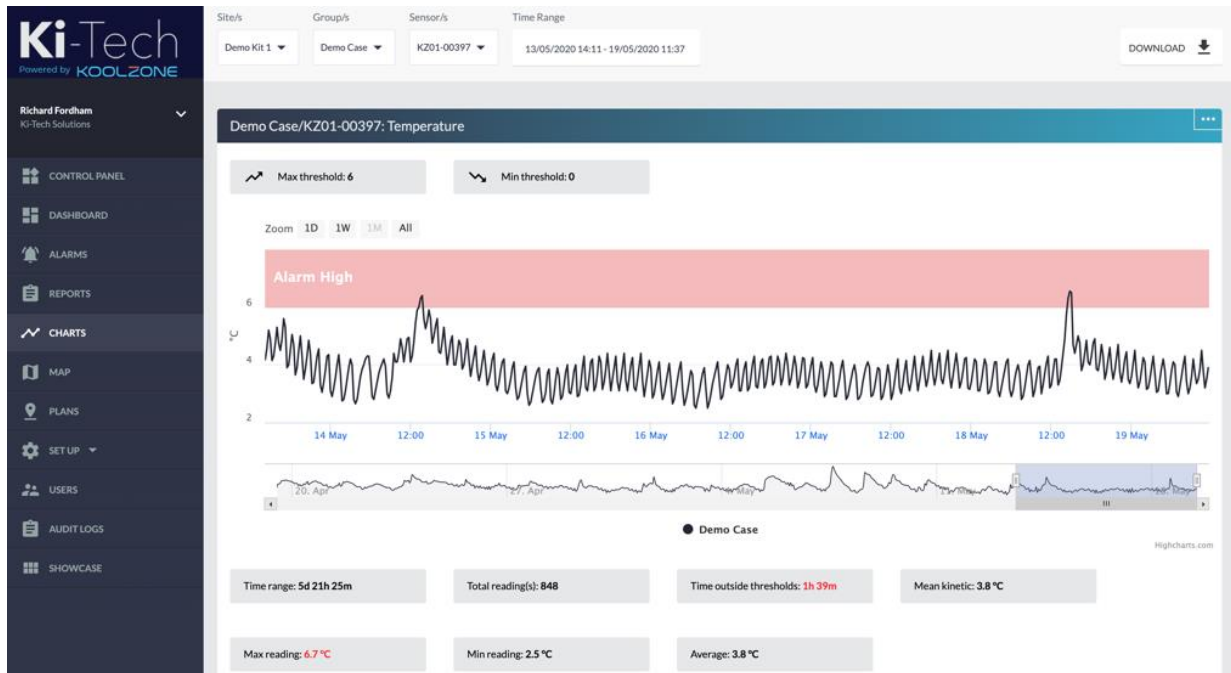
In terms of what can be monitored and controlled, the scope is virtually limitless. Key areas which Ki-Tech look at, monitor and control include such areas as HACCP, temperature, humidity and air quality (for refrigeration, ovens, hold holding, and warewashing as well as ambient measurement for staff and customer areas; predictive maintenance; HVAC; FOG controls; food waste management; operating parameters; CO2 and particulates; power supplies and energy use; refrigerated vehicles and much more; all of which are all able to be integrated into one intuitive dashboard served by a cloud based platform with AES128 military standard encryption security. The latest addition is monitoring levels of Ozone in areas that have been “anti-Covid” deep cleansed.

The user can identify what data that they want to access and how they want it delivered, so system flexibility means that the complete set up can be tailored to individual requirements. Using the latest LoRaWan technology, the completely wireless network is easy, quick to install and ready to go within a matter of minutes, without the need for any cumbersome infrastructure changes or interaction/involvement with network communications engineers.

Automated data collection, particularly with regards to HACCP ensures accurate, compliant and, more importantly, real time reporting and legacy data collection can begin to identify predictive maintenance needs.

Manual checks are time consuming, potentially inaccurate and will not reflect a real time situation, meaning deviations from accepted parameters often go unchecked for a considerable time. By utilising the Ki-Tech KoolZone platform, all of this is avoided. In addition, the cost of manual monitoring can be offset within a matter of months and evidence of full due-diligence evidential tracking is automatically collated.

Plans, photographs and other visuals can be uploaded to the site to provide a visual depiction, onto which sensors are simply drag-and-dropped. If any event is triggered, the operator is alerted either be phone, text or email, with a full escalation process to ensure that nothing slips through the net



The latest technology to be incorporated will be fever detection screening cameras, which Ki-tech are now marketing. Providing fever screening doesn't provide a catch-all solution but what it *does* do is to show the authorities that assessment of the potential risks have been undertaken the relevant steps made to demonstrate due-diligence.

There are a number of options available, from a simple hand held camera that measures each individual approaching one at a time and in close proximity, to those with a higher accuracy level ($\pm 0.3^{\circ}\text{C}$), able to scan up to 30 people at any one time and with a range of up to 9 metres, so whatever the needs, the system is there that can help protect all involved.



Whilst this is an uncertain and extremely challenging time for the entire planet and in particular for those associated with the hospitality sector, it has to be remembered that, now more than ever, good practices have to be followed, and any potential risks to health and safety safeguarded against. Being at the forefront of finding the innovation that will be providing the solutions to deliver those safeguards means Ki-Tech will come out of this period in a stronger position than the one it entered from.