

Heat Lamps

HEAT LAMPS

Catertherm
Innovation in foodservice

**EXPERTS IN
FOOD DISPLAY**





HEAT LAMPS FOOD WARMERS

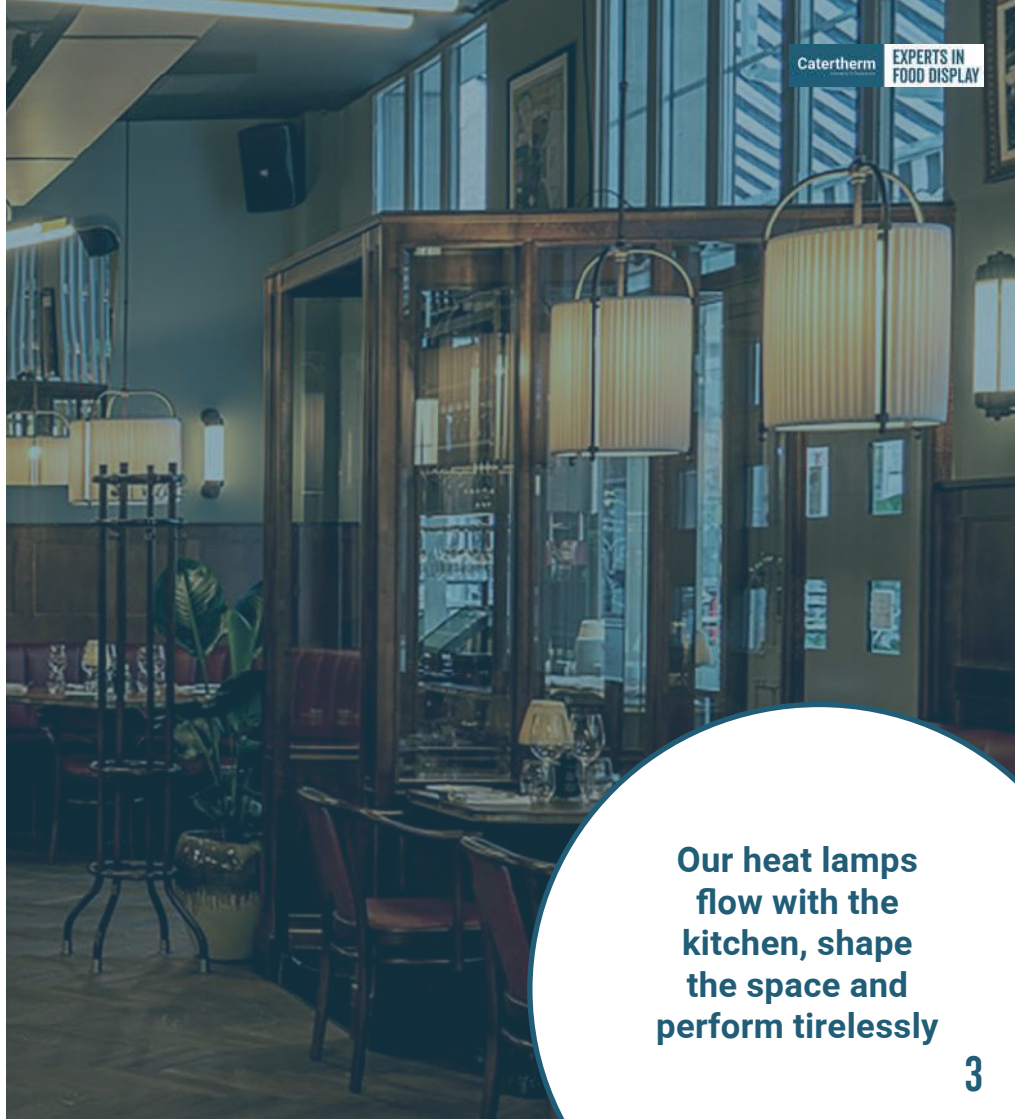
I HEAT LAMPS

Our Heat Lamps are the perfect way to showcase hot food. The pendant models combine timeless design with exceptional performance, making them ideal for demanding restaurant environments.

We offer pendant heat lamps with fixed or retractable cords, including an innovative retractable cord that resembles a fixed cord.

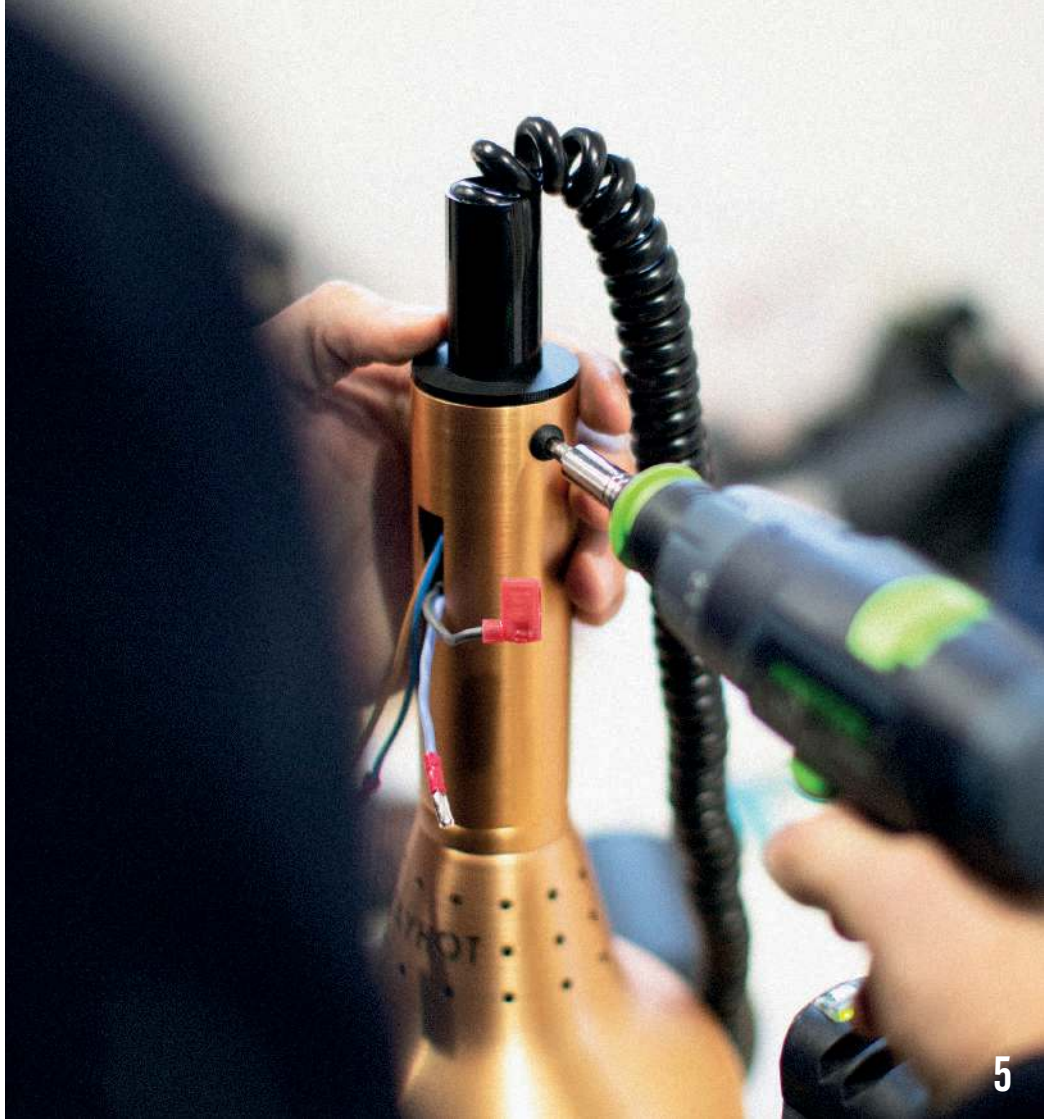
Our freestanding (or table-top) options are great for temporary buffet set-ups or when pendants aren't suitable.

All models are available in a variety of styles and finishes to complement any interior.



**Our heat lamps
flow with the
kitchen, shape
the space and
perform tirelessly**







I PENDANT HEAT LAMPS

- Inspired by the simplicity & elegance of Scandinavian design
- Keep dishes at the perfect temperature, while presenting them beautifully
- Made from high-quality materials & carefully manufactured in Sweden
- Designed for venues that value both function & aesthetics
- An extensive range of models for every location
- Bespoke colours available
- Different wattage bulbs available



I HAL - HEAT & LIGHT



Carbon fibre
heating element
&
LED lighting



Increase the
flexibility &
versatility of your
counter



Works in harmony
with Catertherm's
Hot & Cold Plate



PENDANT HEAT LAMP HAL - HEAT & LIGHT



Jet Black



Stainless Steel

Shade Dimensions:
H 217 mm / Ø 310 mm

Material:
Powder Coated Aluminium / Stainless Steel

Voltage / Power:
230 V / 415 W

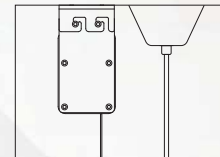
LED Colour Temperature
2700K (Kelvin)

Installation:
Appr. 300 – 500 mm above food

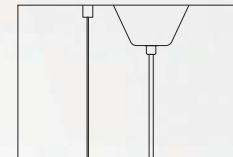
Heat Distribution:
Appr. Ø 350 mm

Heat Source:
400 W Carbon Fibre Quartz Tube

Light Source:
15 W LED Ring



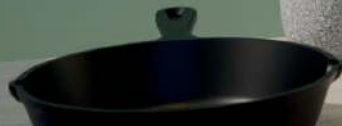
Retractable



Fixed

I SRC - STRAIGHT RETRACTABLE CORD

- A retractable mechanism with the aesthetics of a straight cord
- A clean look with the functionality chefs require
- Small, sleek ceiling rose
- Compatible with all our pendant lamps
- Available in regular and extra long lengths







PENDANT HEAT LAMP - RO / RS



Shade Dimensions:
H 250 mm / Ø 220 mm (RO)
H 220 mm / Ø 220 mm (RS)

Material:
Anodised / Powder Coated Aluminium

Voltage / Power:
230 V / 250 W

Colour Temperature
2700K (Kelvin)

Installation:
Appr. 300 – 500 mm above food

Heat Distribution:
Appr. Ø 350 mm

Heat Source:
250 W E27 Infrared Light Bulb



Graphite Black



Cement Grey



Mid Grey



Umbra Grey



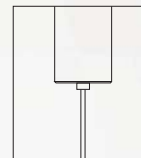
Aluminium



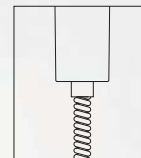
Copper



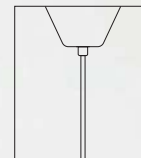
Brass



Straight
Retractable



Retractable



Fixed Cord

PENDANT HEAT LAMP - MO / MS



Shade Dimensions:
H 250 mm / Ø 200 mm (MO)
H 250 mm / Ø 200 mm (MS)

Material:
Anodised / Powder Coated Aluminium

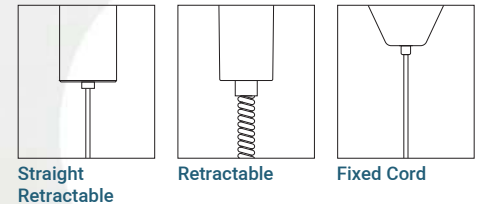
Voltage / Power:
230 V / 250 W

Colour Temperature
2700K (Kelvin)

Installation:
Appr. 300 – 500 mm above food

Heat Distribution:
Appr. Ø 350 mm

Heat Source:
250 W E27 Infrared Light Bulb



PENDANT HEAT LAMP - IO



Shade Dimensions:
H 250 mm / Ø 220 mm

Material:
Anodised / Powder Coated Aluminium

Voltage / Power:
230 V / 250 W

Colour Temperature
2700K (Kelvin)

Installation:
Appr. 300 – 500 mm above food

Heat Distribution:
Appr. Ø 350 mm

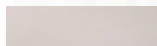
Heat Source:
250 W E27 Infrared Light Bulb



Graphite Black



Racing Green



Mid Grey



Umbra Grey



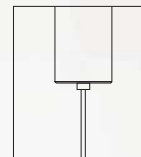
Aluminium



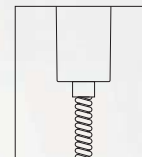
Copper



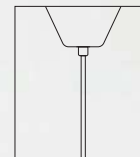
Brass



Straight
Retractable



Retractable



Fixed Cord

PENDANT HEAT LAMP - CLASSIC 1224 / 1223



Black



Black High Gloss



Chrome



Umbra Grey



Aluminium



Copper



Brass

Shade Dimensions:
H 350 mm / Ø 180 mm (1224 / 1223)

Material:
Anodised / Powder Coated Aluminium

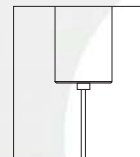
Voltage / Power:
230 V / 250 W

Colour Temperature
2700K (Kelvin)

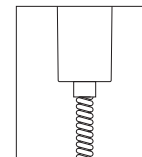
Installation:
Appr. 300 – 500 mm above food

Heat Distribution:
Appr. Ø 350 mm

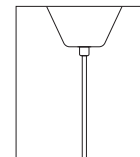
Heat Source:
250 W E27 Infrared Light Bulb



Straight
Retractable



Retractable



Fixed Cord

PENDANT HEAT LAMP - TRATTORIA



Black



Black High Gloss



Bronze



Umbra Grey



Aluminium



Copper



Brass

Shade Dimensions:
H 330 mm / Ø 280 mm (1224 / 1223)

Material:
Anodised / Powder Coated Aluminium

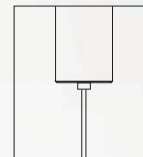
Voltage / Power:
230 V / 250 W

Colour Temperature
2700K (Kelvin)

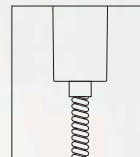
Installation:
Appr. 300 – 500 mm above food

Heat Distribution:
Appr. Ø 350 mm

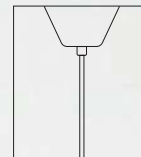
Heat Source:
250 W E27 Infrared Bulb



Straight
Retractable



Retractable



Fixed Cord





I TABLETOP HEAT LAMPS

- Modern design combined with unmatched versatility
- Ideal for a wide range of settings
- Available in single or double models
- Options for adjustable table clamps
- Counter fixed base, suitable for mobile counters or when pendants aren't possible





TABLETOP HEAT LAMP LPF

WEIGHTED BASE / TABLE CLAMP MOUNTING



Shade Dimensions:
H 180 mm / Ø 218 mm

Material:
Powder / Wet Coated
Aluminium, Galvanized
Steel, Raw Brass,
Stainless Steel

Voltage / Power:
230 V / 250 W

Colour Temperature
2700K (Kelvin)

Installation:
Appr. 300 – 500 mm
above food

Heat Distribution:
Appr. Ø 350 mm

Heat Source:
250 W E27 Infrared
Light Bulb



Black Grey



Cement Grey



Copper



Brass

TABLETOP HEAT LAMP LPF

FIXED MOUNTING / FIXED MOUNTING HIDDEN CORD



Black Grey



Cement Grey



Copper



Brass

Shade Dimensions:
H 180 mm / Ø 218 mm

Material:
Powder / Wet Coated
Aluminium, Galvanized
Steel, Raw Brass,
Stainless Steel

Voltage / Power:
230 V / 250 W

Colour Temperature
2700K (Kelvin)

Installation:
Appr. 300 – 500 mm
above food

Heat Distribution:
Appr. Ø 350 mm

Heat Source:
250 W E27 Infrared
Light Bulb

DOUBLE TABLETOP HEAT LAMP LPF

WEIGHTED BASE / FIXED MOUNTING



Black Grey



Cement Grey



Copper



Brass

Shade Dimensions:
H 180 mm / Ø 218 mm

Material:
Powder / Wet Coated
Aluminium, Galvanized
Steel, Raw Brass,
Stainless Steel

Voltage / Power:
230 V / 2 x 250 W

Colour Temperature
2700K (Kelvin)

Installation:
Appr. 300 – 500 mm
above food

Heat Distribution:
Appr. Ø 350 mm

Heat Source:
250 W E27 Infrared
Light Bulb











Catertherm
Innovation in foodservice.

**EXPERTS IN
FOOD DISPLAY**

For full technical specifications, visit:
catertherm.com/downloads



PHONE

+44 (0) 1636 679415



EMAIL

info@catertherm.com



WEBSITE

catertherm.com



14A Telford Drive, Brunel Drive Industrial Estate, Newark, Nottinghamshire, NG24 2DX, United Kingdom